



**FOR SALE**  
**KYD\$1,475,000**

Current

## Q, South Sound Luxury lifestyle townhouses #6



'Q', South Sound located in the prestigious locale of South Sound offers a luxury lifestyle living. 2BR/2.5BA, 2900 sq. ft. townhouses offering modern architecture, two swimming pools, gym and 200 ft. beach.

### Location:

South Sound

### Features:

- 2900 Sq Ft.
- 2 Bedrooms
- 2.5 Bathrooms
- 1.51 Acres
- Beach View, Pool View
- Condominium
- 2024



SCAN ME TO FIND OUT MORE

MLS: 414411



**Heather Richards**

Sales Associate  
heather.richards@remax.ky

**+1 (345) 943 8573**



**Edna Ebanks**

Sales Associate  
edna.ebanks@remax.ky

**+1 (345) 949 0681**

Proud sponsors of





**Q, South Sound Luxury lifestyle townhouses #6**



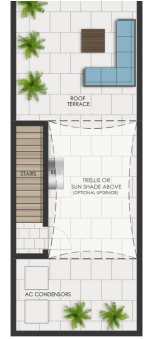
GARAGE



FIRST



SECOND



ROOF



**Heather Richards**

Sales Associate  
heather.richards@remax.ky

**+1 (345) 943 8573**



**Edna Ebanks**

Sales Associate  
edna.ebanks@remax.ky

**+1 (345) 949 0681**

Proud sponsors of





**FOR SALE**  
**KYD\$1,475,000**

Current

# Q, South Sound Luxury lifestyle townhouses #6

## Property Details

- Cable TV
- Dishwasher
- Kitchen
- Microwave
- Patio
- Refrigerator
- Storm Windows
- Water Frontage
- City Water
- Garage: 2
- Kitchen area
- Multi-Zone AC
- Pool
- Sewer
- Utility Room
- Dining Area
- Gym
- Living Room
- Oven: Electric
- Porch: Unscreened
- Stories: 3
- Washer/Dryer: Yes

## Additional Information

|              |  |                  |                         |                  |                        |
|--------------|--|------------------|-------------------------|------------------|------------------------|
| Title        | <b>Q, South Sound Luxury lifestyle townhouses #6</b> | Class            | <b>Pre-Construction</b> | Total # of Units | <b>22</b>              |
| Construction | <b>Block</b>   | Land Certificate | <b>Not Issued</b>       | Water Frontage   | <b>Yes</b>             |
| Floor Level  | <b>1</b>   | Stories          | <b>3</b>                | Foundation       | <b>Pier &amp; Beam</b> |
| Strata #     | <b>1</b>   |                  |                         |                  |                        |

## Running Costs

|                                   |              |                                |              |                             |            |
|-----------------------------------|--------------|--------------------------------|--------------|-----------------------------|------------|
| Monthly Insurance                 | <b>CI\$1</b> | Monthly Maintenance Costs      | <b>CI\$1</b> | Sewage in Maintenance Costs | <b>Yes</b> |
| AC in Maintenance Costs           | <b>No</b>    | Gardening in Maintenance Costs | <b>Yes</b>   | TV in Maintenance Costs     | <b>No</b>  |
| Insurance Included in Maintenance | <b>No</b>    | Pest in Maintenance Costs      | <b>No</b>    |                             |            |



**Heather Richards**

Sales Associate  
heather.richards@remax.ky

**+1 (345) 943 8573**



**Edna Ebanks**

Sales Associate  
edna.ebanks@remax.ky

**+1 (345) 949 0681**

Proud sponsors of

