

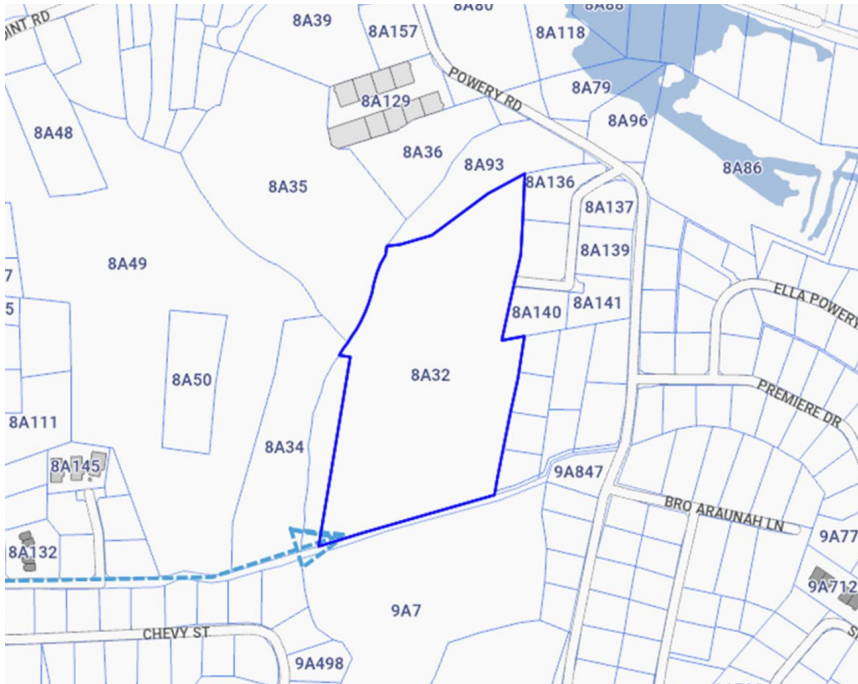


FOR SALE

KYD\$6,500,000

Pending/Conditional

11 ACRE WEST BAY DEVELOPMENT LAND - MASSIVE REDUCTION!



11 Acres of prime land for development, this parcel will have a roadway from Capt Reginald Parsons Drive for access as indicated by blue dotted line. Average height ASL is 6ft.

Location:

West Bay

Features:

- 11 Acres**
- Inland**
- Low Density Residential**



SCAN ME TO FIND OUT MORE

MLS: 415717



Michael Binckes

Sales Associate
michael.binckes@remax.ky

+1 (345) 945 2011

remax.ky

member of **cireba**