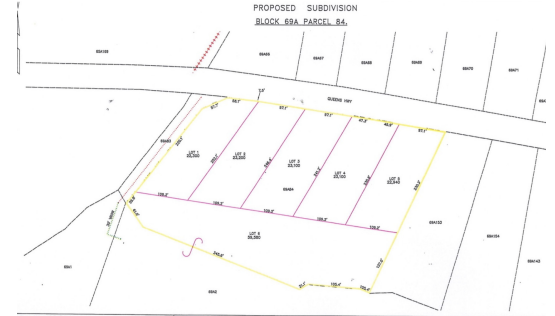




**FOR SALE**  
**KYD\$128,000**


Pending/Conditional

# Queen's Highway Subdivision Lot #5



... Perfect location to build a spacious home or cottage for those weekend getaways that you and your family will enjoy for many years to come. Let the soothing breeze and tranquility of East End captivate you.

### Features:

-  **0.52 Acres**
-  **Garden View**
-  **Low Density Residential**

### Location:

 **East End**



MLS: 416870



**Cindy Raymond**

Lund Team Sales Associate  
cindy.raymond@remax.ky

**+1 (345) 949 9752**



**Kim Lund**

Broker / Owner  
kim.lund@remax.ky

**+1 (345) 949 9772**

Proud sponsors of

