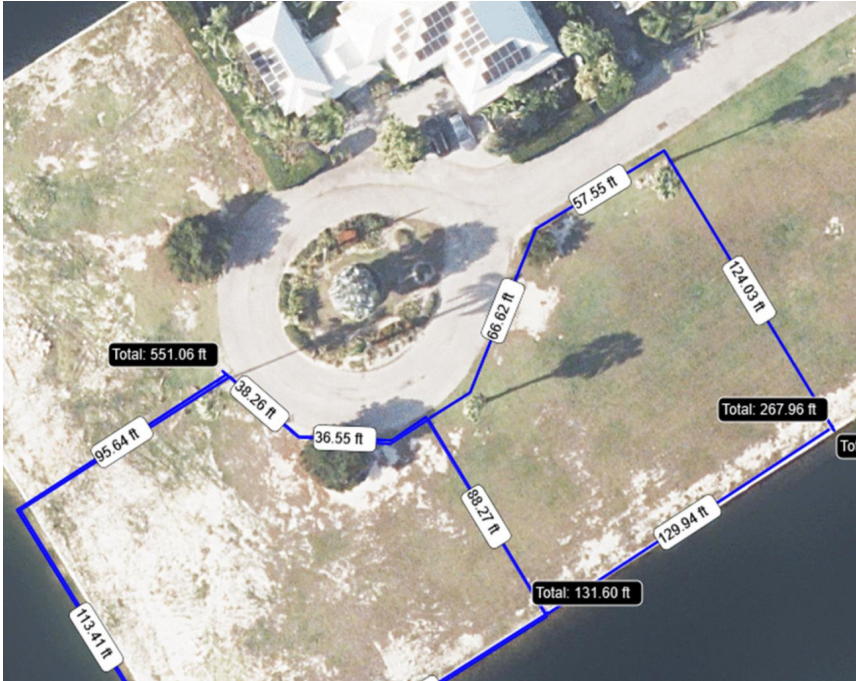




FOR SALE
KYD\$1,475,000

Withdrawn

Crystal Harbour Phase 2 270' Canal waterfront Corner Lot



Easterly Tibbetts Highway to SafeHaven Drive to Crystal Harbour Gates go right onto Crighton Drive then left onto Waterford Quay last lot on the left

Location:

Seven Mile Corridor

Features:

- .4238 Acres**
- Canal Front, Canal View, Pool View, Water Front**
- Low Density Residential**



MLS: 417799



Kass Coleman

Sales Associate
kass.coleman@remax.ky

+1 (345) 949 2396

Proud sponsors of

