

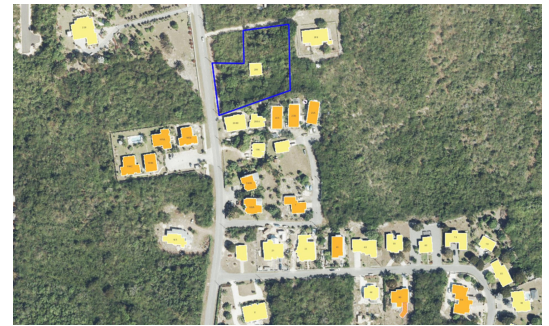
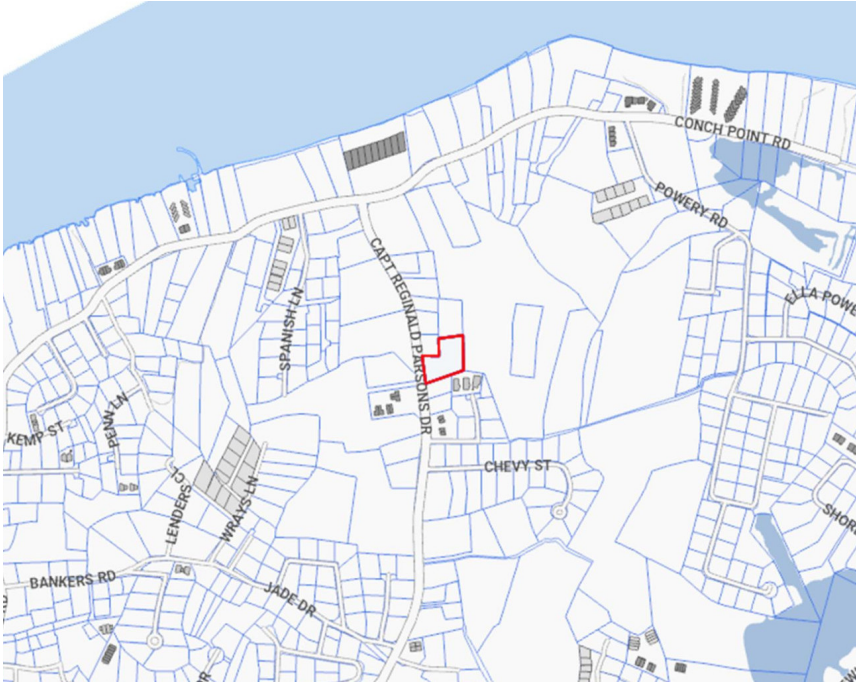


# FOR SALE

## KYD\$995,000

Pending/Conditional

## REDUCED! Prime 1.1 acre in West Bay



Rare and prime 1.11 acre parcel with 170ft road frontage on Capt Reginald Parsons Drive (Mount Pleasant Drive) - 7ft Above Sea Level and ready to build on.

### Location:

**West Bay**

### Features:

- 1.110 Acres**
- Inland**
- Low Density Residential**



SCAN ME TO FIND OUT MORE

MLS: 418956



**Michael Binckes**

Sales Associate  
michael.binckes@remax.ky

**+1 (345) 945 2011**

Proud sponsors of



The information contained herein has been furnished by the owner(s) and/or their nominee and represented by them to be accurate. RE/MAX Cayman Islands, its agents and employees disclaim any liability or responsibility for any inaccuracies, errors, or omissions in the represented information. All the information contained herein is subject to errors, omissions, price changes, prior sale, or withdrawal, without notice and is at all times subject to verification by the purchaser(s).