



**FOR SALE**  
**KYD\$590,000**

New

## 20 OCEAN REACH- CHARMING 2-BED/ 3-BATH IN AWESOME LOCATION



This two-bedroom, three-bathroom modern townhome offers exceptional style and functionality within the quiet Ocean Reach development on Old Crewe Road. Positioned against a small lake, this complex provides a relaxed lifestyle with quick access to George Town and South Sound.

**Location:**

**George Town**

**Features:**

- 1206 Sq Ft.**
- 2 Bedrooms**
- 3 Bathrooms**
- Garden View**
- Condominium**
- 2021**



**SCAN ME TO FIND OUT MORE**

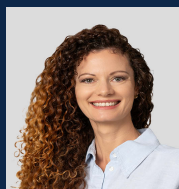
**MLS: 420974**



**Zane Kuttner**

Sales Associate  
zane.kuttner@remax.ky

**+1 (345) 233 5121**



**Cher Kuttner**

Sales Associate  
cher.kuttner@remax.ky

**+1 (345) 233 5121**

Proud sponsors of





**FOR SALE**  
**KYD\$590,000**

New

## 20 OCEAN REACH- CHARMING 2-BED/ 3-BATH IN AWESOME LOCATION



**Zane Kuttner**

Sales Associate  
zane.kuttner@remax.ky

**+1 (345) 233 5121**



**Cher Kuttner**

Sales Associate  
cher.kuttner@remax.ky

**+1 (345) 233 5121**

Proud sponsors of



The information contained herein has been furnished by the owner(s) and/or their nominee and represented by them to be accurate. RE/MAX Cayman Islands, its agents and employees disclaim any liability or responsibility for any inaccuracies, errors, or omissions in the represented information. All the information contained herein is subject to errors, omissions, price changes, prior sale, or withdrawal, without notice and is at all times subject to verification by the purchaser(s).



**FOR SALE**  
**KYD\$590,000**

New

# 20 OCEAN REACH- CHARMING 2-BED/ 3-BATH IN AWESOME LOCATION

## Property Details

- Breakfast
- Dishwasher
- Gym
- Living Room
- Oven: Yes
- Porch: Unscreened
- Septic
- Storm Windows
- City Water
- Fence
- Kitchen
- Microwave
- Patio
- Refrigerator
- Smart Home Monitoring
- Utility Room
- Dining Area
- Furnished: Yes
- Kitchen area
- Multi-Zone AC
- Pool
- Security
- Stories: 2
- Washer/Dryer: Yes

## Additional Information

Furnished	<b>Yes</b>	Title	<b>20 OCEAN REACH-CHARMING 2-BED/ 3-BATH IN AWESOME LOCATION</b>	Class	<b>Existing</b>
Total # of Units	<b>32</b>	Construction	<b>Block</b>	Land Certificate	<b>Not Issued</b>
Floor Level	<b>1</b>	Stories	<b>2</b>	Foundation	<b>Slab</b>
Strata #	<b>875</b>				

## Running Costs

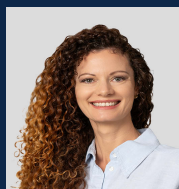
Monthly Maintenance Costs	<b>CI\$739</b>	Sewage in Maintenance Costs	<b>No</b>	AC in Maintenance Costs	<b>No</b>
Gardening in Maintenance Costs	<b>No</b>	TV in Maintenance Costs	<b>No</b>	Insurance Included in Maintenance	<b>Yes</b>
Pest in Maintenance Costs	<b>Yes</b>				



**Zane Kuttner**

Sales Associate  
zane.kuttner@remax.ky

**+1 (345) 233 5121**



**Cher Kuttner**

Sales Associate  
cher.kuttner@remax.ky

**+1 (345) 233 5121**

Proud sponsors of

