

FOR SALE
KYD\$245,000

Sold

506 DOWNTOWN REACH









Downtown Reach is a new residential development just five minutes from George Town right off the Linford Pierson Highway. Closely located to the amenities of George Town and the Grand Harbour area, the price point and locale are unbeatable.

Location:

 **George Town**

Features:

-  **646 Sq Ft.**
-  **1 Bedrooms**
-  **1.5 Bathrooms**
-  **Garden View**
-  **Condominium**
-  **2020**



SCAN ME TO FIND OUT MORE

MLS: 410144



Kass Coleman

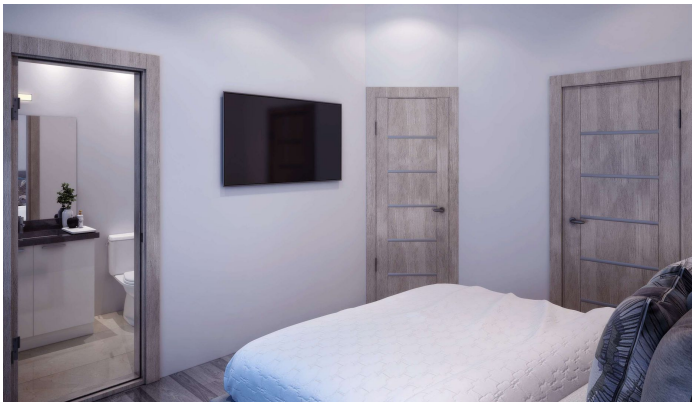
Sales Associate
kass.coleman@remax.ky

+1 (345) 949 2396

remax.ky

member of  **cireba**

506 DOWNTOWN REACH



Kass Coleman

Sales Associate
kass.coleman@remax.ky

+1 (345) 949 2396

remax.ky

member of  **cireba**

506 DOWNTOWN REACH

Property Details

- | | | |
|---------------|-----------------------|------------------------|
| ✓ Cable TV | ✓ Central AC | ✓ City Water |
| ✓ Dining Area | ✓ Dishwasher | ✓ Furnished: Partially |
| ✓ Kitchen | ✓ Kitchen area | ✓ Living Room |
| ✓ Microwave | ✓ Oven: Electric | ✓ Patio |
| ✓ Pool | ✓ Porch: Unscreened | ✓ Refrigerator |
| ✓ Septic | ✓ Washer/Dryer: Other | |

Additional Information

Furnished	Partially	Title	506 Downtown Reach	Class	Pre-Construction
Total # of Units	52	Construction	Block	Floor Level	2
Foundation	Slab	Strata #	1		

Running Costs

Monthly Insurance	CI\$1	Monthly Maintenance Costs	CI\$1	Sewage in Maintenance Costs	No
AC in Maintenance Costs	No	Gardening in Maintenance Costs	No	TV in Maintenance Costs	No
Insurance Included in Maintenance	No	Pest in Maintenance Costs	No		



Kass Coleman

Sales Associate
 kass.coleman@remax.ky

+1 (345) 949 2396

remax.ky

member of  **cireba**